

## OUR TIMBER PRODUCTS

100 % of the forests managed by Pallisco

### AVAILABILITY OF PALLISCO & CIFM TIMBER PRODUCTS

ESSENCES	LOGS	GREEN LUMBER	DRIED LUMBER	PLANED
Afara	X	X		
African greenheart	X			
African Mahogany		X		
African Padouk		X		X
African Teak		X		
African walnut		X		
African whitewood	X	X	X	X
Albizzia	X	X		
Apa		X		X
Brimstone tree	X	X		X
Cedar Kokoti	X	X		X
Dina		X		
Iroko		X		X
Ilomba	X			
Koto	X			
Lati Wood	X			
Mansonia		X		
Moabi		X		X
Niove	X	X		
Okan	X	X		X
Pink mahogany		X		
Red wood	X	X		
Sapele		X	X	X
Sipo		X		X
Stinkwood tree	X			
Tiama	X	X		
Tali	X	X		X
Yellow Sterculia	X			

#### Products:

- Panelling : African Teak, African whitewood, Brimstone tree, Apa, Cedar Kokoti, moabi, Okan, African padouk, Iroko, Sapele, Sipo and Tali
- Outdoor terrace blades : tali
- Round poles : African



The mark of responsible forestry



The mark of responsible forestry

**Pallisco & CIFM**

478 Avenue des Cocotiers - BP 394, Douala Cameroon - e-mail : info@pallisco-cifm.com

www.pallisco-cifm.com

**IN THE INTEREST OF YOUR TIMBER PRODUCTS AND OUR FUTURE,  
WE UNDERTAKE RESPONSIBLE MANAGEMENT OF OUR FORESTS**



**Pallisco** is a timber harvesting and logs trading company present in Cameroon since 1972.

**CIFM** (Mindourou Industrial and Forestry Centre) is a first and second wood processing company that exclusively transforms timbers from concessions managed by Pallisco. **CIFM** is present in Cameroon since 1996.

FSC® and OLB Production: 100 000 m<sup>3</sup> of logs, 30 000 m<sup>3</sup> of lumber

More than 25 species traded

Exports in more than 30 countries

Area: 388 949 ha

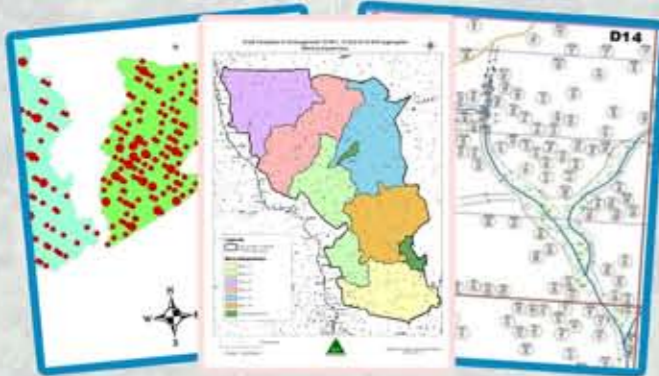
Among which 341 708 ha FSC® certified since 2008

500 direct jobs



## REGULAR TIMBER HARVESTING ECOSYSTEMS AND ENVIRONMENTAL SERVICES PRESERVED

### SUSTAINABLE FOREST MANAGEMENT FOR A LONG TERM TIMBER PRODUCTION



Forests managed by Pallisco consist of more than 300 species of trees among which only 20 are regularly traded. The tree harvesting is carried out once every 30 years following diameters of cut that allow the reconstitution of forest stands. The rarest and most sensitive species are excluded from the harvesting in order to their preservation. By only cutting one tree per hectare and rotation, Pallisco provides an annual production of more than 100,000 m<sup>3</sup>.

### REDUCED IMPACT LOGGING METHODS

Pallisco implements logging practices ensuring the integrity of the most important areas for biodiversity and for maximum security for its operators. The streams shores, swamps and steep slopes are excluded from logging and an important part of the forest massif is placed as reserve. The harvesting operations are held after large mammals inventories in order to prevent its potential impacts.



### A SUPPORT FOR FOREST REGENERATION

Collected trees are replaced by young plants from our nurseries. Based on the ecology of the selected species, plantings are carried out on large scale plots as well as in cutting gaps. At least 5,000 trees are planted every year.



### MONITORING OF THE FOREST

The forest managed by Pallisco is regularly visited by teams supported by the Administration to prevent illegal activities such as poaching, illegal logging or land clearings. All access points to the forest are surrounded by guarded fences.



## COMMITMENT TO A ECONOMIC, SOCIAL AND CULTURAL HARMONIOUS DEVELOPMENT

### A PERMANENT CONSULTATION WITH INDIGENOUS PEOPLE AND LOCAL POPULATIONS

Consultations are held throughout the year to identify sacred sites and essential trees to cultural practices in order to define adequate conditions of preservation. Meetings are regularly held and implemented by Pallisco to identify development projects for the benefit of the populations. Each year, classrooms, health halls and water drills are built for an average budget of € 30,000.



### MODERN CONDITIONS OF LIFE AND WORK

Pallisco & CIFM employees and their families benefit from comfortable housing, free health care and have access to basic products (basic commodities) at cost prices. Besides, employees benefit from regular training allowing them to take on additional responsibilities in these companies.



### TRAINING AND COLLABORATION WITH NATIONAL INSTITUTES

Pallisco & CIFM are incubators of talents and invest in the training of the future actors of the forest sector. Every year, more than twenty students undergo internships or training in the companies. Many of them integrate Pallisco & CIFM workforce later on.



### RELATIONSHIPS WITH PARTNERS

Pallisco is accompanying different NGOs and research institutes in the preservation of its forests and their wildlife and in the integration of climate change concerns. Various local and international NGOs contribute to ensure the compatibility of forestry activities with the interests of the local populations. Collaborations are established with health professionals to improve medical services to employees and their families.

### FSC® CERTIFIED FOREST OPERATIONS APPLIED IN ALMOST ALL THE CONCESSIONS SINCE 2008

Pallisco represents near half of the FSC® certified forest surface of the country. The label is internationally recognized as insuring responsible production and consumption of wood stemming from an ecologically appropriate, socially beneficial and economically viable management.